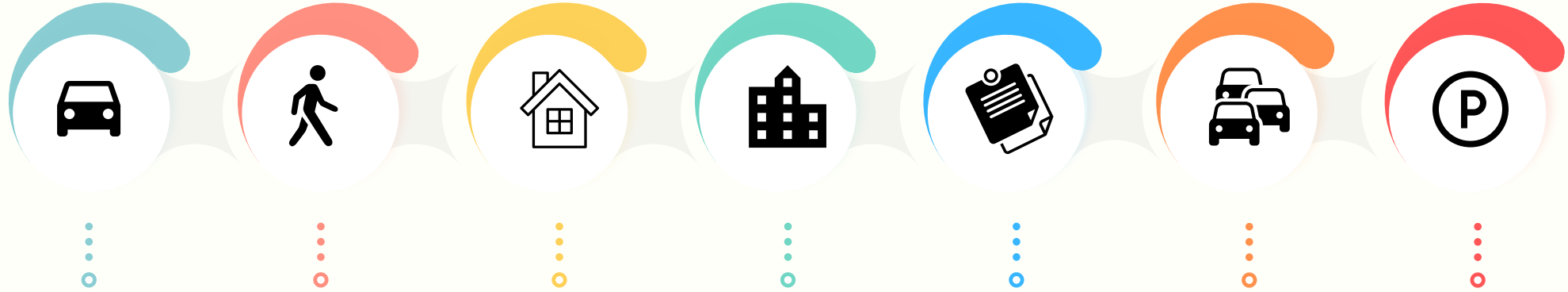


PATROL UNIT

2024 -JULY



700

CAR CHECK

Officers conduct car checks when a traffic violation, parking violation, or suspicious vehicle is observed. Vehicles may be occupied or unoccupied depending on the circumstances of the event.

802

PEDESTRIAN CHECK

Pedestrian checks are conducted when an officer contacts the driver or occupants of a vehicle stopped for a traffic violation or who are believed to be involved in criminal activity. Pedestrian checks may also be conducted when officers are called to a residence, obtain the identifying information of the people present, and conduct a law enforcement database search of those people for any outstanding warrants.

165

RESIDENTIAL CHECK

Residential checks are conducted when officers physically respond to a residence regarding a call for service or check the exterior of a residence that is enrolled in the residence check program while the occupants are out of town.

2250

BUILDING CHECK

Building checks are conducted when an officer is called to a building/business or physically checks the exterior of a building/business for unsecured entry points after hours of operation. This is done to identify if a closed business is susceptible to criminal activity or has already been the victim of criminal activity.

38

GENERAL ORDINANCE SUMMONS

Citations issued by an officer to individuals for municipal code violations that require a court appearance or payment of fine.

92

TRAFFIC TICKETS

Citations issued by an officer for municipal traffic code violations that require a court appearance or payment of fine.

399

PARKING TICKETS

Citations issued by an officer for municipal parking violations that require a payment of fine.